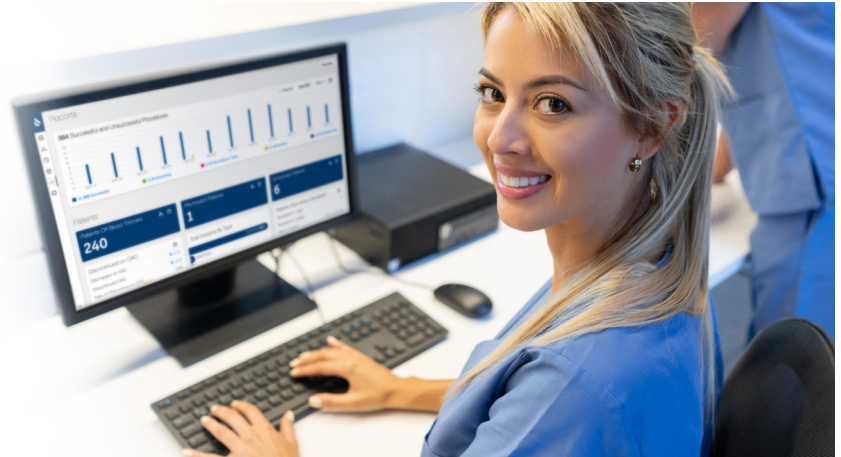


## Work Simplified with Hawkeye



Streamline Patient Coordination and Optimize Operational Efficiencies

### Highlight Features



#### SECURE LOGIN

Single sign-on supported via SAML2



#### HIPAA COMPLIANT

AWS Cloud Environment monitored by Dome9 for HIPAA compliance



#### SOC2 TYPE2 CERTIFIED

Dedicated to security, privacy, confidentiality, and availability

### Data

#### DATA MANAGEMENT

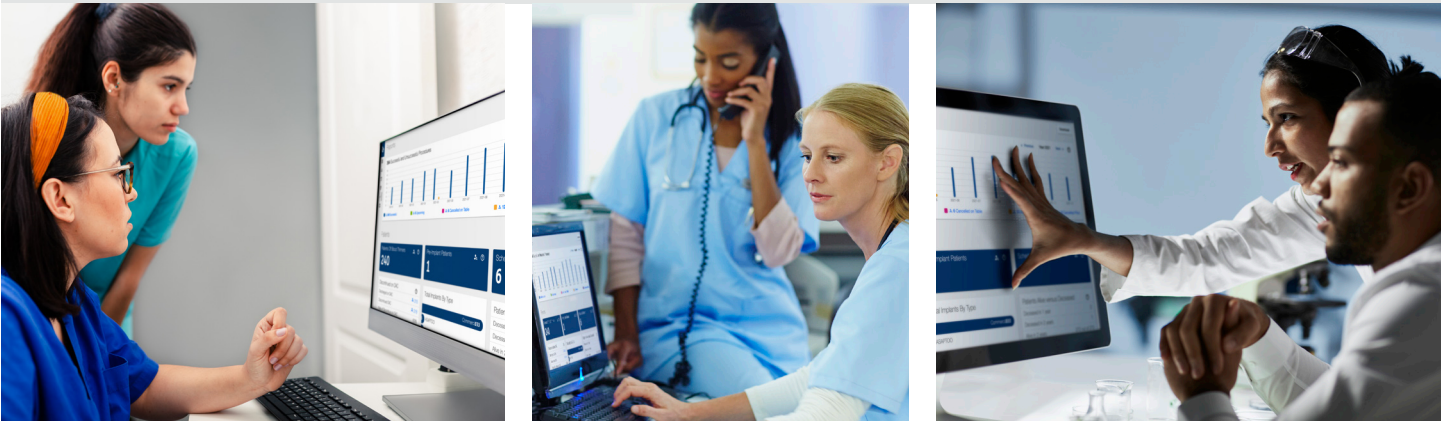
- Procedure data for LAAC patients is stored within HAWKEYE, including PII/PHI
- Typically, organizations store less than 1,000 patients' data in HAWKEYE
- Boston Scientific never shares your data or uses it for marketing purposes. Your data is your own.
- You may request a copy of your data or destruction of your data at any time
- Access to data is heavily monitored
- Boston Scientific administrators follow the Principal of Least Privilege (PoLP) when accessing data

#### DATA STORAGE

- All data is stored in the United States
- Data encrypted at rest using AES-256 transparent RDS encryption
- Data is backed up nightly
- Backups are stored encrypted and deleted after 30 days
- Uploaded files are scanned for viruses

**NEED HELP?** VISIT [www.watchman.com/hawkeye](http://www.watchman.com/hawkeye) EMAIL [hawkeye@bsci.com](mailto:hawkeye@bsci.com)

## WORK SIMPLIFIED WITH HAWKEYE



### Access and Security

#### IDENTITY AND ACCESS MANAGEMENT

- Strong passwords and password max age enforced
- Password reuse is disallowed
- Token-based MFA can be enabled on request

#### CONNECTION SECURITY

- Connections are made over TLS 1.3, with a minimum version of TLS 1.2 supported
- Connections are only allowed from the United States
- Stateful WAF used to protect against many types of common attacks
- Heavily restricted firewall rules on internal network
- Keys and certificates rotated every 3 months

#### CODE VERIFICATION

- All changes are reviewed by a dedicated auditor for impacts to security and privacy
- Full suite of automated tests verify functionality between changes
- Automated dependency vulnerability management verified before each change
- All builds undergo automated scans for OWASP top 10
- Software deployed as immutable signed images to prevent tampering

#### 3RD PARTY VALIDATION

- SOC2 Type2 Certified
- Yearly 3rd party penetration tests performed

**NEED HELP?** VISIT [www.watchman.com/hawkeye](http://www.watchman.com/hawkeye) EMAIL [hawkeye@bsci.com](mailto:hawkeye@bsci.com)